

# Installation Guide For Mac OS X

# SOL TEC



## Thank you for choosing Sol Tec as your Internet Provider

We are here to give you the best Internet service there is. Period! The Internet is the world's largest library of entertainment and information. You know better than we do what you want, so we just make it easy for you to find it. Once you get online you will find that we have provided a starting point for you to access all this information.

We have tried to make your Internet experience as simple and enjoyable as possible. Everything you need to access that information is here in this setup guide. Please feel free to contact us with any comments or suggestions, or if you would like to see something more included. Your feedback is always welcome!

Your email address:

Email addresses are all lower case, and have between 4 and 8 characters followed by **@soltec.net**.

Your password is:

Passwords are case-sensitive and are between 6 and 8 characters long; If you are having problems please check the Caps Lock light on your keyboard to make sure it is off

*If you have any questions, please don't hesitate to call us at (217)355-7659  
Mon-Fri 8:00am-6:00pm, Sat 11:00AM-3:00PM*

## Welcome!

These directions contain simple step-by-step instructions for getting on the Internet. All you need is a computer, a modem, and a telephone line. Soon you will have access to the world's largest collection of information and the fastest growing media to date. You will be able to communicate with people across town and across the world. You will be able to get information on topics of interest you didn't even know existed!

## Creating a Dial-up connection for Mac OS X

First, click the apple in the upper left hand corner of your screen; this is your **Apple** menu.

1. From the **Apple** menu, select **System Preferences**. You can also access this control panel directly by clicking on the **System Preferences** icon along the bottom of your screen.



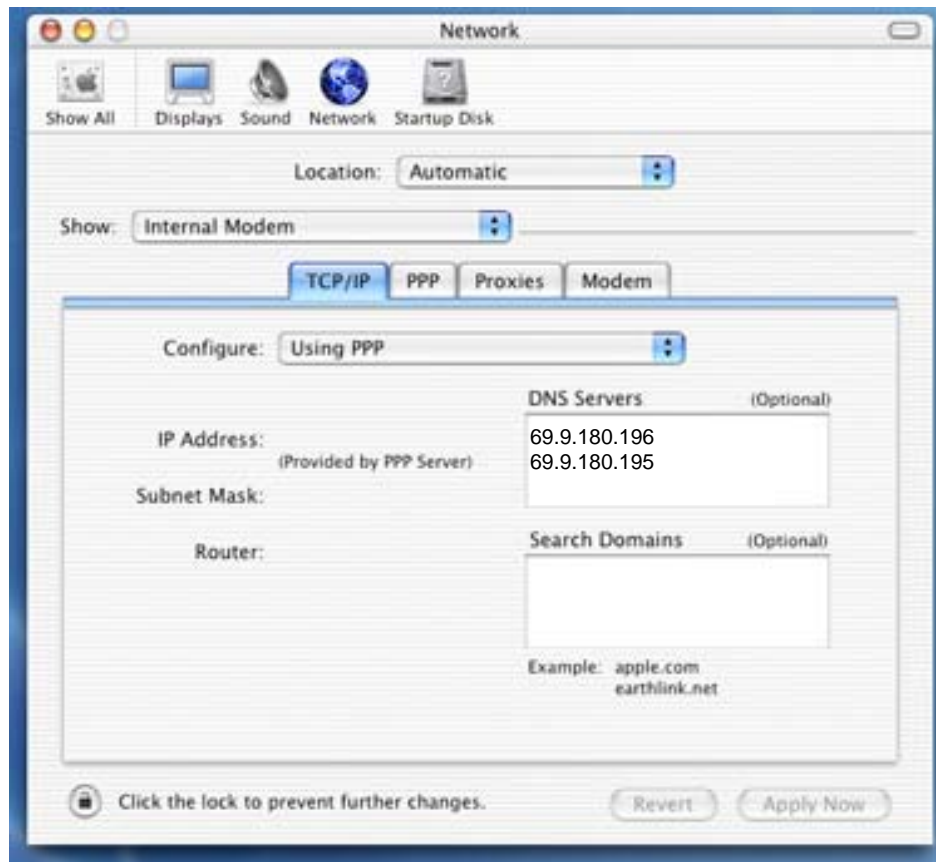
OR



2. Click the **Network** icon in the **Internet & Network** panel.



3. Select **Internal Modem** in the **Show Menu**. In the **TCP/IP** tab, set the **Configure** option to **Using DHCP**. In the **DNS Servers** box, enter **69.9.180.196** and **69.9.180.195**.



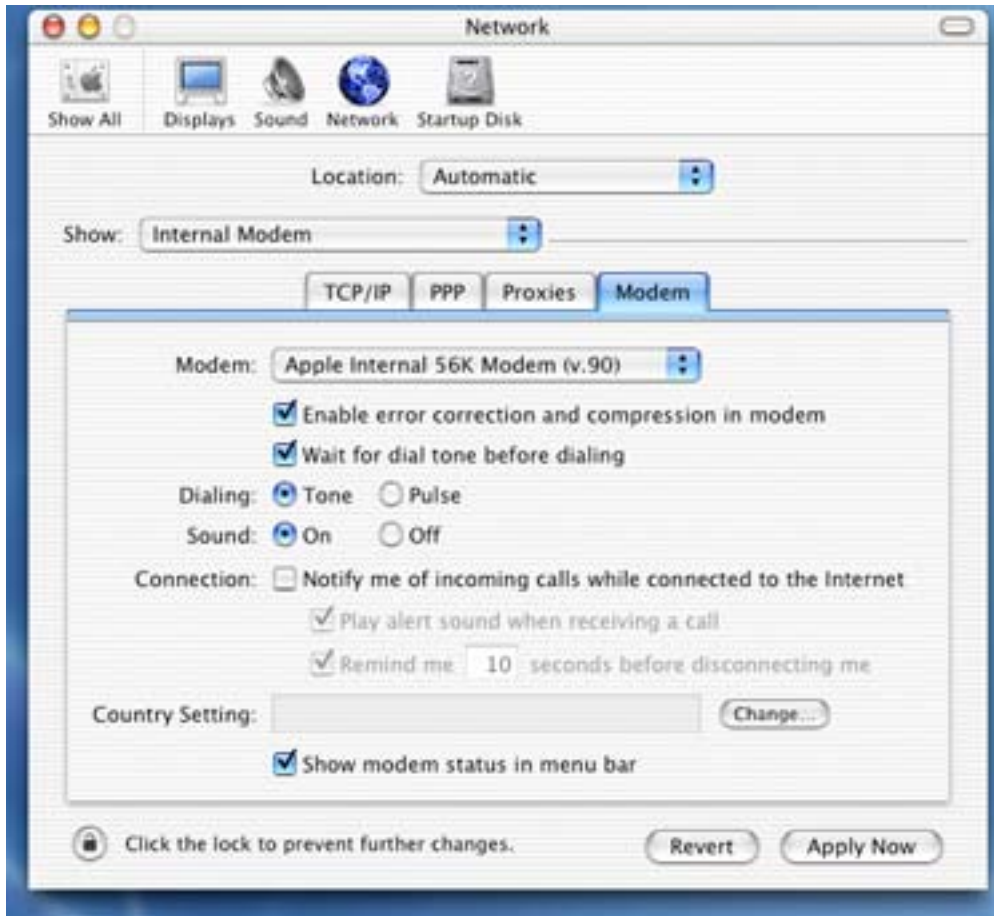
4. Change the **Configure** option to **Using PPP**.
5. Select the **PPP** Tab. Enter **Sol Tec** in the **Service Provider** field. Enter your **username** in the **Account Name** field followed by **@soltec.net**. (example: **username@soltec.net**) Enter your **password** in the appropriate field. In the **Telephone Number** field, type the corresponding dialup number for your location. You may leave the **Alternate Number** field blank. If you don't want to enter your password each time you connect to the Internet, check the box next to **Save password**.



**Note:** If you require 10-digit dialing in order to access a local number, make sure to include 1+ the area code when you enter the phone number above.

**Note:** Remember: your local telephone company has the final word on whether a call is local for you or not. Please contact them to make sure that the number you choose is a local call if you live outside the Champaign-Urbana or Danville areas.

6. Select the **Modem** tab. Check the two boxes below the **Modem** drop-down menu. Select the appropriate **Dialing** and **Sound** options for your phone line and modem. The **Show modem status in menu bar** option is suggested, but not necessary. Click **Apply Now** once you've verified all of the information.

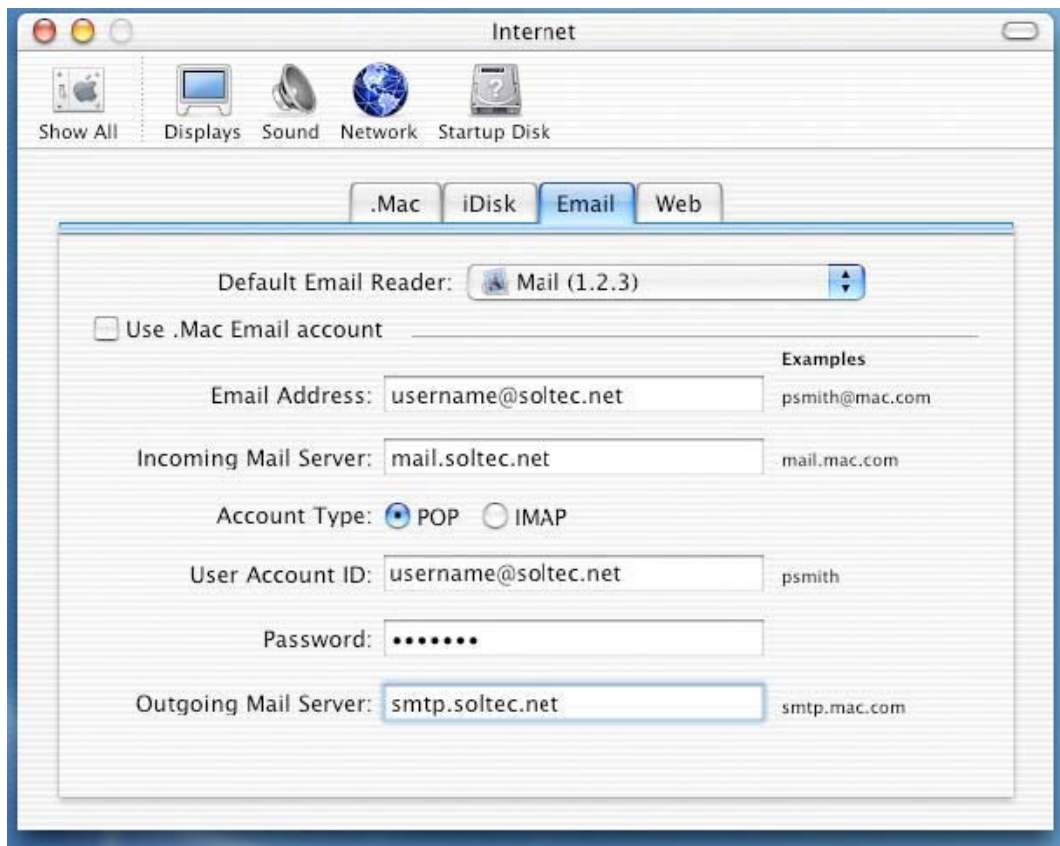


7. To connect to the Internet, click on the **Phone icon** on the **Top menu bar**. Click **Connect**.



8. To setup the **Mail** client included in your Mac OS, open the **Apple** menu and select **System Preferences...**

9. In this control panel, choose **Internet**. Select the **Email** tab.



10. Choose your **Default Email Reader**. In the **Email Address** field enter your full Sol Tec email address (username@soltec.net). In the **Incoming Mail Server** field, enter **mail.soltec.net**. Choose **POP** for the **Account Type**. Enter your **email address** into the **User Account ID** field. Enter your **password** into the **Password** field. (Remember that passwords are case-sensitive; make sure you do not have your Caps Lock on if your password contains all lower-case letters.) In the **Outgoing Mail Server** field, type **smtp.soltec.net**.

Congratulations! You have successfully set up your Mac email client. To access your Sol Tec email, click on the **Mail** icon in the **Lower menu bar** along the bottom of your screen.

# System Info

## Configuration Information

This information is provided for those users more familiar with setting up their own systems.

### Mail settings

Incoming Mail Server: mail.soltec.net

Outgoing Mail Server: smtp.soltec.net

### News settings:

Newsgroup server: news.soltec.net

### DNS settings:

69.9.180.196 (yellow.soltec.net)

69.9.180.195 (white.soltec.net)

**Domain Name:** soltec.net

### Dial-up access numbers:

Champaign 530-0059

Danville 431-9200

Hoopeston 283-6611

Visit our website for other dialup numbers: <http://www.soltec.net/nationwide/>